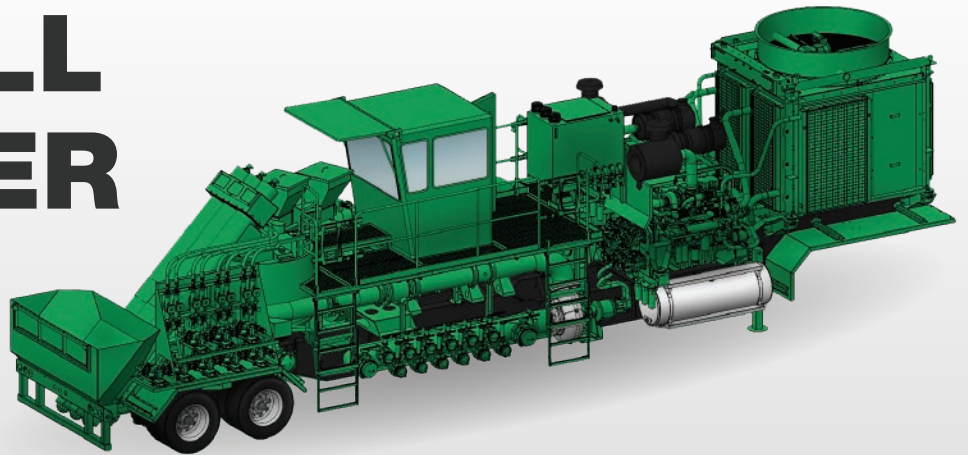


PROPELL BLENDER UNIT



Operational Efficiency

The Propell Blender Unit not only offers the latest technology in accuracy and control, but promotes safety and enhances serviceability. A high-performance blending package with maximum operational efficiencies and built to last with engineered quality from Propell.

PERFORM

Cube Radiator

A cube radiator provides a single radiator package to cool both engines, fuel, gearboxes and hydraulics, all while increasing cooling performance and serviceability.

Twin Engines

Both engines are mounted low to the ground and are configured to be serviced as right and left hand components. Allowing easy access to fuel filters, oil, oil filters, the starter, and the alternator/belts.

Discharge Pump

The discharge pump is mounted on the road-side and interchangeable component mounts allow any pump type.

Accurate Control

The latest technology in the Propell control system provides the most accurate sand delivery by using calibrated augers, tub overflow protection and auto-rate control.

PROTECT

Fire Prevention Shield

Mounted between the hydraulic tank and pumps is a fire-prevention shield. This added feature prevents hydraulic fluid from spraying on the engine, turbo and exhaust.

Guards

Moving parts are securely guarded, including our proven, proprietary drive shaft guard which is engineered to contain the drive shaft in the event of a failure.

Confidence at Heights

All components on the Propell Blender are mounted at deck height or provide access via safe platforms and rails.

Serviceability

A carefully engineered chassis ensures all major service items are placed for ease-of-access and hide hot surfaces.

REQUEST A QUOTE

1.800.845.7249 | sales@propell.com



Propell

SPECIFICATIONS

**We work with all major OEM's to build to customer-spec*

Propell Stock Blender

Trailer Chassis

- DOT & Transport Canada certified chassis

Engine

- Twin CAT 800 hp C-18
- No DEF required

Radiator

- GHT Cube radiator

Fuel Tank

- Twin 150 gallon

Gearbox

- Namco
- Gears manufactured in North America

Suction Manifold

- Split manifold design
- Double-welded
- (2) 8" ports
- (12) 4" ports

Discharge Manifold

- Split manifold design
- Double-welded
- (10) 4" ports

Suction Pump

- Gorman Rupp
- 612L20-B-B Option
- 16" ground clearance

Discharge Pump

- Customer Specified

Piping

- 10" sch80 discharge piping
- Magnetic flow meters on both sides
- Optional turbine flow meters

Hydraulics

- Danfoss

Blending Tub

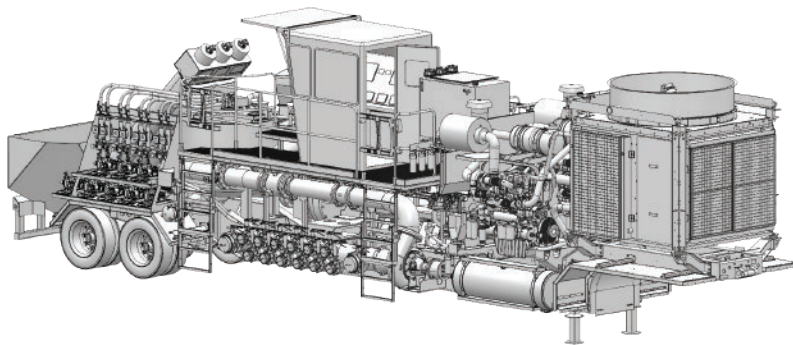
- 11 Barrell capacity

Augers

- (3) 12" full-pitch augers
- 11,000 lbs/min each

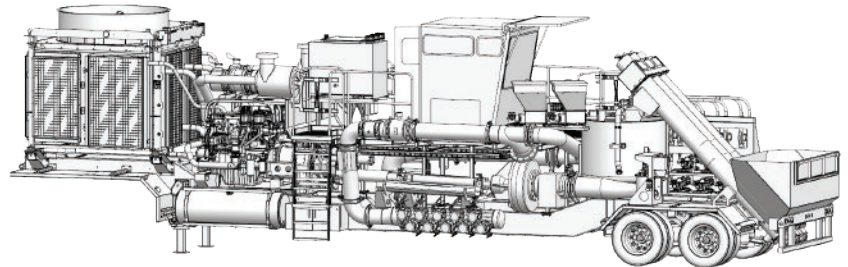
Chemical System

- 8 Waukesha Chemical pumps



» PROPELL

Through the development process in design and engineering, Propell offers standardized parts, carefully engineered components, detailed technical documentation and well-stocked parts to keep you up and running.



PERFORM. PROTECT. PROPELL.

www.propell.com | 1.1.800.845.7249



Propell